

BIG PINE UNIFIED SCHOOL DISTRICT

Back to School 2020-2021

**WARRIOR
CODE**



AUGUST 13, 2020

Dear Big Pine Families,
After a meeting with Inyo County Public Health today, we were advised to open the 2020-2021 school year with distance learning. We are acting on public health's recommendations and based on the significant increase of COVID-19 cases in our county. We have been planning all summer to return to in person instruction and we are disappointed that those plans are now postponed. In about two weeks, we will have more information. Until then, we will safely begin school for our students, families, and community through distance learning.

From the entire school and district staff, we look forward to the day we can all attend school together again. Until then, please stay safe, healthy, connected, and engaged.

Sincerely,
Ed Dardenne-Ankringa
Superintendent & Principal

FIRST DAY OF SCHOOL AUGUST 17, 2020 10:00 A.M. - 1:00 P.M.

Students will be provided with welcome back to school activities from their teacher(s) for the week. These will be available in the school parking lot. Signs will direct you to pick up student materials by grade level.

TECHNOLOGY PICK-UP AUGUST 19-21, 2020 10:00 A.M. - 1:00 P.M.

Student Chromebooks will be distributed in the school parking lot.

August 19th - Middle School
August 20th - High School
August 21st - Elementary School

DISTANCE LEARNING BEGINNING AUGUST 24TH

Students will begin distance learning with their teacher for the whole school day. Students will follow the school calendar and bell schedule as usual. The school day will remain the same start and end time and the same instructional minutes.

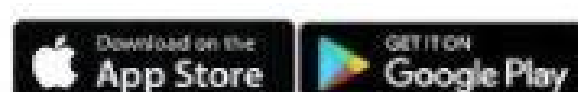


INTRODUCING AERIES PARENT PORTAL

As a part of our continuing efforts to provide information regarding your student's progress and status, parents will be able to view information from our secure school database using our secure BPUUSD Parent Portal.

You previously received a letter containing the information needed to verify your student's enrollment information. That information is required to create a BPUUSD Parent Portal account. Please call our school office if you would like assistance with this.

To create your account please visit www.bigpineusd.aeries.net or download the Aeries Parent Portal App to your smart device.



YEARLY STUDENT ENROLLMENT

Students and families can enroll online via the Aeries Parent Portal. Paper enrollment packets are still available in the school office. We recommend you use the online enrollment option.

SCHOOL LUNCH DISTRIBUTION

10:00 A.M. - 1:00 P.M.

Beginning August 17th and every week that we are in distance learning, a grab and go lunch will be available for pick-up at the school cafeteria.

CARE TEACHER AND SCHOOL COUNSELOR

The care teacher and the school counselor are available to assist students and parents with questions or concerns related to student social-emotional needs and support. They may be reached at:

Care Teacher:
mankringa@bigpineschools.org

School Counselor
smeza@bigpineschools.org